

A photograph of two women walking through a transit station. The woman on the left is wearing a red hijab and a black and white striped dress, using a white cane. The woman on the right is wearing a dark coat and a patterned scarf. They are walking between metal turnstiles. In the background, other people and station infrastructure are visible.

R N I B

See differently

**Braille and
mobility
catalogue**

2020

Placing your order

Payment is required when placing your order.



Buy direct from our easy-to-use online shop – **shop.rnib.org.uk**



Call our Helpline on **0303 123 9999**.
Monday to Friday: 8am to 8pm; Saturday 9am to 1pm.



Email **helpline@rnib.org.uk**

RNIB

Floor 1 Midgate House, Midgate,
Peterborough, PE1 1TN.



We accept Visa, Visa Debit, Switch Visa Debit, Mastercard and Electron.
Or you can send us a cheque or postal order with your order, payable to RNIB.

Special orders

We work with partners to deliver products on our behalf. Where a product is listed as **“special order”** we will pass on your contact information to be able to deliver the product effectively. We may quote extended delivery times, outside of our standard terms and conditions for these products. For further details, visit our online shop or contact our Helpline.

Keep up-to-date

Be one of the first to hear about our new product launches and special offers by subscribing to our **New Product Guide**. Call the Helpline on **0303 123 9999** to sign up for the braille, audio, large print or email formats. If you're online, you can also subscribe to our regular **eNewsletter** at **shop.rnib.org.uk**

For product demonstrations on our most popular products, or to see presentations by blind and partially sighted individuals who use our products, visit **youtube.com/user/rnibuk**, and view the **RNIB Products playlist**.

Visit **sightlinedirectory.org.uk**, where you can find all services in your area supporting blind and partially sighted people.



Understanding our pricing

Many of our products have been specially designed which means blind and partially sighted people or anyone buying on their behalf, will not pay VAT on these products. Where there is one price listed, everyone pays this price, this may be the price inclusive of VAT or a zero-VAT rated publication. Where there are two prices listed, blind and partially sighted people and anyone buying on their behalf, can pay the lower price which excludes VAT.

Prices are correct at time of publishing and VAT is 20 per cent. Both may be subject to change. For the latest prices call our Helpline or visit our online shop.

All the money we make from selling products is reinvested in developing new products and services.

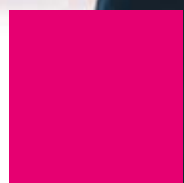
With our extensive range of products and services, RNIB is supporting blind and partially sighted people to live the lives they want to lead; and with your help we can continue to break down the barriers for people with sight loss.

Whenever you buy a product from our online shop, you are helping RNIB to support people with sight loss.

2	Placing your order
2	Special orders
2	Keep up-to-date
3	Understanding our pricing
7	Canes and accessories
8	Choosing your cane
8	Buying the right length
8	Children's canes (12 to 34 inches)
8	Personalised canes
8	Shaft colour
8	HiLite colour
8	Grips
10	Special order lengths
10	Children's canes (70 to 85cm)
10	Adult canes (36 to 72 inches)
11	Children's canes
11	Three section canes
12	Symbol canes
13	Guide canes
14	Long canes
15	Aluminium folding long canes
16	Aluminium rigid long canes
17	Graphite folding long canes
19	Illuminated long canes
20	Cane tips
20	Hook-style tips
20	Thread-style tips
20	Push-on tips
22	Nylon cane tips
23	Ceramic and metal cane tips
24	High mileage cane tips
25	Rough terrain cane tips
25	Tip adaptors

26	Cane accessories
28	Adaptive Mobility Devices (AMD)
28	Adaptive mobility device
30	Walking sticks and ferrules
30	Walking sticks
32	Ferrules
33	Go explore
33	Victor Reader Trek talking book player and GPS
34	Eyeshields
36	Perkins brailers
38	Writing braille
38	Perkins accessories
38	Perkins servicing and repairs
38	Frames and styles
40	Braille paper
41	Embosser paper
42	Brailon
42	Embossing film
44	Stationery
44	Diaries and calendars
46	Orbit Reader 20
47	Coming soon
47	VICTA grant
47	RNIB grant
48	Braille displays and note-takers
50	Embossers
53	Labelling
53	Braille labelling
54	Tactile solutions
55	Keyboard labelling
56	RNIB PenFriend

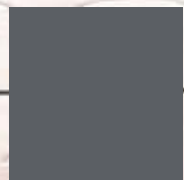
58	Tactile games
60	In Your Pocket
61	Reading services
61	RNIB Newsagent
61	RNIB Library
61	RNIB Bookshare
61	Children's shared reading books
63	Learning braille
63	Braille courses
63	RNIB Certificate in contracted Unified English Braille
63	Ready, Steady, Read
64	Learning the alphabet
65	Maths and science
66	Buying from RNIB
67	Contacting us
67	Delivery
67	Cancelling or amending your order
67	Guarantee period
68	Returning unsuitable items
68	Which products can't be returned?
68	Returning faulty items
69	Return postage costs
69	How to return a product
70	Damaged goods and packaging
70	Damaged on delivery
70	Complaints and feedback
70	New Product Guide
71	Products for Life Stores



Canes

and

accessories



Choosing your cane

If you'd like advice on the right cane for your needs, or to arrange cane training for yourself or a relative, please contact your local society or Social Services team for assistance. Contact our Helpline for help finding your local service.

Symbol canes indicate that the carrier has sight and/or hearing loss; they aren't designed as support aids or navigation aids.

Guide canes help you find obstacles before they find you! You hold a guide cane diagonally across your body and then use it to find obstacles in front of you such as kerbs or steps. We recommend getting advice from a professional, for example a mobility officer, before purchasing a guide cane.

Long canes are rolled or tapped from side to side as you walk, to find your way and avoid obstacles. Training is needed to use a long cane safely and effectively.

Buying the right length

All cane measurements are from the top of the handle to the bottom end of the tip and increase in steps of five centimetres (or two inches).

Children's canes (12 to 34 inches)

Special order length canes cannot be returned unless they're faulty and can take up to six weeks for delivery.

Personalised canes

Please call our Helpline to order your personalised cane. Your bespoke cane cannot be returned unless it is faulty and can take up to six weeks for delivery.

Shaft colour

Pick a single colour or a mix.

White, Red, Pink, Yellow, Red stripes, Green, Gold, Blue, Orange, Purple, Black.

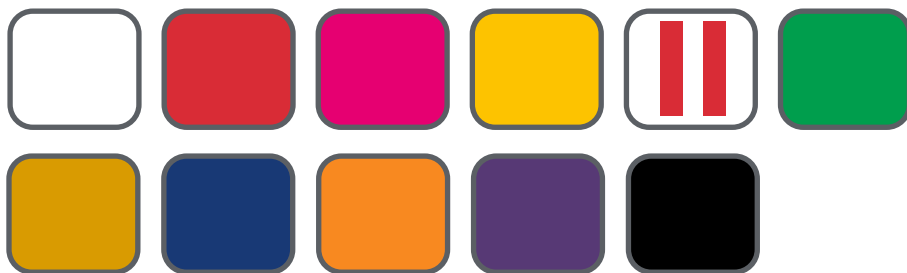
HiLite colour

Add a golf-grip handle and a tip in the same colour. Blue, Green, Orange, Pink.

Grips

As standard, canes are fitted with a black golf-grip handle. Personalise your cane with a brightly coloured golf-grip handle, a wood or cork handle or a crook handle.

Cane shaft colour options



Selection of Ambutech cane handle options



From top left:
Black, Blue Golf-grips,
Crook handle, Cork
handle and Green
Golf-grip handle.

HiLite colour - matching colour handle and tip



Available in blue, green, orange and pink.

Ambutech cane joint



Four-section
deaf-blind cane



Cane joint

Special order lengths

30cm is 12 inches – rigid only

35cm is 14 inches – rigid only

40cm is 16 inches

45cm is 18 inches

50cm is 20 inches

55cm is 22 inches

60cm is 24 inches

65cm is 26 inches



Children's canes (70 to 85cm)

70cm is 28 inches

75cm is 30 inches

80cm is 32 inches

85cm is 34 inches

Adult canes (36 to 72 inches)

90cm is 36 inches

95cm is 38 inches

100cm is 40 inches

105cm is 42 inches

110cm is 44 inches

115cm is 46 inches

120cm is 48 inches

125cm is 50 inches

130cm is 52 inches

135cm is 54 inches

140cm is 56 inches

145cm is 58 inches

150cm is 60 inches

155cm is 62 inches

160cm is 64 inches

165cm is 66 inches

170cm is 68 inches

175cm is 70 inches

180cm is 72 inches

Children's canes

Three section canes

Folding Ambutech aluminium long canes for children. Fitted with a white hook-style roller marshmallow tip and black golf-grip handle. Choose from a range of reflective colours. Special order canes lengths, 40cm to 65cm.



White children's Ambutech folding cane

£22.50 £27.00

MC05WHITE 70cm ★ Bestseller

MC06WHITE 75cm MC07WHITE 80cm

MC08WHITE 85cm



Pink children's Ambutech folding cane

£22.50 £27.00

MC05PINK 70cm

MC07PINK 80cm

MC06PINK 75cm

MC08PINK 85cm



Blue children's Ambutech folding cane

£22.50 £27.00

MC05BLUE 70cm

MC07BLUE 80cm

MC06BLUE 75cm

MC08BLUE 85cm



Yellow children's Ambutech folding cane

£22.50 £27.00

MC05YELLOW 70cm

MC07YELLOW 80cm

MC06YELLOW 75cm

MC08YELLOW 85cm



Deafblind children's Ambutech folding cane

£22.50 £27.00

MC05REDWHITE 70cm MC07REDWHITE 80cm

MC06REDWHITE 75cm MC08REDWHITE 85cm

Symbol canes

Increase confidence when you're out and about with a symbol cane to highlight to other people that you have sight and/or hearing loss.

These reflective, lightweight aluminium canes fold into either three or four sections, ideal for putting into your bag when not in use. They're fitted with an ID cane tip and double elastic cord.

They do not have a handle grip.

Please note, symbol canes aren't to be used as a walking stick or support aid, or to detect obstacles on the ground, such as kerbs and steps. These symbol canes cannot be personalised and are only available in two colours; white, and red and white (deafblind).

White Ambutech symbol cane

£15.50 **£18.60**

Three-section

MS20 70cm

Four-section

MS22 85cm **MS23** 100cm **MS25** 105cm



Deafblind Ambutech symbol cane

£15.50 **£18.60**

Three-section

MS40 70cm

Four-section

MS41 85cm **MS42** 100cm **MS43** 105cm



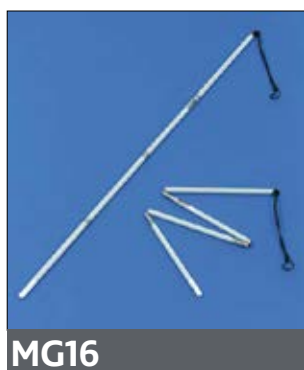
Guide canes

Guide canes help you find obstacles before they find you! You hold a guide cane diagonally across your body, pointing to the floor, and then use it to find obstacles in front of you such as kerbs or steps.

The cane should reach just above waist level when you're standing upright with the tip of the cane touching the ground between your legs. We recommend getting advice from a professional, such as a mobility officer, before purchasing a guide cane.

These four-section folding guide canes are made from durable aluminium with a conical joint design. Not to be used for supporting body weight.

They're fitted with a hook-style tip and do not have a handle grip. The CordLock device securely holds the internal elastic in place while you change the tip.



Ambutech guide cane with pencil tip

A four-section folding reflective white guide cane, fitted with a white hook-style pencil tip (MP27).

£20.75 £24.90

MG16 85cm **MG22** 100cm **MG26** 110cm

MG18 90cm **MG24** 105cm **MG28** 115cm

MG20 95cm



Ambutech guide cane with roller tip

A four-section folding reflective white guide cane, fitted with a with hook-style roller marshmallow tip (MP26).

£24.50 £29.40

MG29 85cm **MG32** 100cm **MG34** 110cm

MG30 90cm **MG33** 105cm **MG35** 115cm

MG31 95cm

Long canes

Long canes are rolled or tapped from side to side as you walk, to find your way and avoid obstacles. Specialist training is needed to use a long cane safely and effectively.

If you'd like to find out more, or arrange cane training for yourself or a relative, please contact your local society or Social Services team for assistance. Contact our Helpline for help finding your local service.

A long cane should reach between your sternum (breastbone) and under the chin when you're standing upright and the cane tip is touching the ground between your legs. The length and speed of walking stride will also affect the length of cane required. Not for supporting body weight.

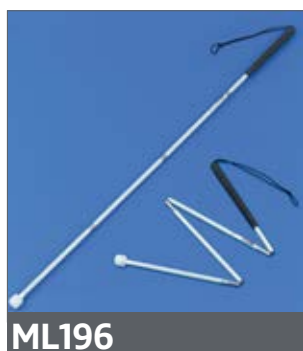
Our canes are available in aluminium or lighter graphite, and either rigid, folding or telescopic designs. Handle grips are black padded golf-grips with one flattened side, unless otherwise stated. All Ambutech long canes are reflective.



Aluminium folding long canes

These folding long canes are made from anodized aluminium to provide superior tactile transmission, and conical joints.

They're fitted with a hook-style tip and a black golf-grip handle. The CordLock device securely holds the internal elastic in place while you change the tip.



ML196



ML60

Ambutech folding aluminium long cane with roller marshmallow tip

A reflective white long cane, fitted with a white hook-style roller marshmallow tip (MP26).

£27.99 £33.59

Four-section

ML196 90cm	ML54 110cm	ML57 125cm
ML197 95cm	ML55 115cm	ML58 130cm
ML198 100cm	ML56 120cm	ML59 135cm
ML53 105cm		

Five-section

ML60 140cm	ML61 145cm	ML62 150cm
-------------------	-------------------	-------------------

Ambutech folding aluminium long cane with marshmallow tip

A reflective white long cane, fitted with a white hook-style marshmallow tip (MP28).

£24.50 £29.40

Four-section

ML172 105cm	ML175 120cm	ML177 130cm
ML173 110cm	ML176 125cm	ML178 135cm
ML174 115cm		

Five-section

ML179 140cm	ML180 145cm	ML181 150cm
--------------------	--------------------	--------------------



ML172



Ambutech crook handle folding aluminium long cane with pencil tip

A four-section reflective white long cane, fitted with a white hook-style pencil tip (MP27) and standard black golf-grip with metal crook handle.

£26.99 £32.39

ML67 125cm **ML69** 135cm

ML68 130cm **ML70** 140cm

Special order lengths

These canes cannot be returned unless they're faulty and can take up to six weeks for delivery.

ML63 105cm **ML65** 115cm

ML64 110cm **ML66** 120cm



Aluminium rigid long canes

Long canes are rolled or tapped from side to side as you walk, to find your way and avoid obstacles. These rigid canes are an alternative to those designed to fold away when not in use.



Ambutech rigid aluminium long cane with pencil tip

A reflective white long cane, fitted with a white hook-style pencil tip (MP27).

£19.99 £23.99

ML73 125cm

Special order lengths

These canes cannot be returned unless they're faulty and can take up to six weeks for delivery.

ML71 110cm **ML72** 120cm



Ambutech crook handle rigid aluminium long cane with pencil tip

A reflective white long cane, fitted with a white hook-style pencil tip (MP27) and standard black golf-grip with metal crook handle.

£20.99 £25.19

ML76 125cm **ML90** 135cm

Special order lengths

These canes cannot be returned unless they're faulty and can take up to six weeks for delivery.

ML75 115cm **ML89** 120cm **ML77** 130cm

Graphite folding long canes

Lighter than aluminium canes, with conical joint design. They're fitted with a hook-style tip and a black golf-grip handle. The CordLock device securely holds the internal elastic in place while you change the tip.



Ambutech folding graphite long cane with rolling ball tip

A reflective white long cane, fitted with a white hook-style rolling ball tip (MP43).

£35.50 £42.60

Four-section

ML186 105cm **ML189** 120cm **ML191** 130cm

ML187 110cm **ML190** 125cm **ML192** 135cm

ML188 115cm

Six-section

ML193 140cm **ML194** 145cm **ML195** 150cm





Ambutech folding graphite long cane with roller marshmallow tip

A reflective white long cane, fitted with a white hook-style roller marshmallow tip (MP26).

£37.50 £45.00

Four-section

ML78 105cm **ML81** 120cm **ML83** 130cm

ML79 110cm **ML82** 125cm **ML84** 135cm

ML80 115cm

Five-section

ML85 115cm

Six-section

ML86 120cm **ML91** 135cm **ML93** 145cm

ML87 125cm **ML92** 140cm **ML94** 150cm

ML88 130cm



Ambutech slimline folding graphite long cane with marshmallow tip

A reflective white slimline long cane, fitted with a white thread-style marshmallow tip (MP92). 9.5mm diameter. 50 per cent lighter than a regular aluminium long cane. To be used as a light mobility cane. The elastic in this cane cannot be changed.

£34.99 £41.99

Seven-section

MS33 115cm **MS36** 130cm **MS38** 140cm

MS34 120cm **MS37** 135cm **ML39** 145cm

MS35 125cm



Ambutech telescopic graphite long cane with ceramic tip

A reflective white long cane, fitted with a white thread-style ceramic tip (MP89). The telescopic graphite shaft is both lightweight and strong. This light-duty cane is designed for occasional use, not for rugged everyday use. Ideal for use indoors or in familiar areas where you need extra coverage. Two extendable lengths available to suit adults and children.

£49.99 £59.99

ME15 65cm to 127cm (26 to 50 inches)

ME16 78cm to 150cm (31 to 59 inches)

Illuminated long canes

Be seen at night or in poor weather with an illuminated aluminium folding long cane



Gizahand illuminated folding aluminium long cane with roller marshmallow tip

A reflective white long cane, fitted with a white roller marshmallow tip.

Use as a conventional folding long cane in good conditions and insert the rechargeable power bank when you need to be more visible to other pedestrians, as well as cyclists and motorists.

The rubber cap on the handle protects the power bank in poor weather and is attached to the handle by elastic so that it won't get lost.

£119.99 £143.99

Four-section

ML200 135cm 26 LEDs 96 lumens

Five-section

ML201 145cm 20 LEDs 72 lumens



Cane tips

If you need help fitting a new tip, we recommend contacting your local society or Social Services team for assistance. Contact our Helpline for help finding your local service. It's recommended that only the manufacturer's replacement parts are used.

Hook-style tips

Hook-style tips are held securely in place with the elastic cord. They are easy to change or replace.

Hook-style tips fit most of our canes.

They do not fit the slimline graphite canes (MS33 to MS39), the telescopic graphite canes (ME15 and ME16) or symbol canes (MS20 to 25).

Thread-style tips

Our 8mm thread-style cane tips fit the slimline graphite canes (MS33 to MS39) and the telescopic graphite canes (ME15 and ME16). They screw snugly into cane shafts.

They also fit on to the hook-to-thread adaptor (MP115).

Push-on tips

Push-on tips fit tightly over the cane shaft. They will also fit over the hook-style pencil tip.





Nylon cane tips

This range of popular tips is ideal for everyday use.



Pencil tip

Straight with a rounded end, blends into the bottom of the cane and allows for easy folding. Used with the two-point touch technique.

£2.99 **£3.59**

MP27 Hook **MP98** Thread



Marshmallow tip

Low profile cylindrical 2.5cm tip, designed to run easily over the ground. Used with the two-point touch technique.

£2.99 **£3.59**

MP28 Hook **MP92** Thread



Roller marshmallow tip

Hard-wearing 3cm abrasion-resistant tip that lasts two to three times longer than a regular tip. Allows constant contact with the ground, giving the user good feedback.

£9.75 **£11.70**

MP26 Hook **MP95** Thread



Flex tip

A bell-shaped tip with flexible neck designed to bounce over uneven surfaces, while still giving good tactile feedback. Made to last two to three times longer than a regular tip. Base of the tip measures 4.5cm in diameter.

MP110 Hook **£9.75** **£11.70**



MP96



MP82

Rolling ball

Lightweight and easy to manoeuvre. It has a unique built-in roller shield that protects the bearing that rolls from side to side. Ideal for constant contact technique.

Large 5cm diameter, designed to give greater sensitivity, handle road obstacles and pavement cracks easily.

£6.99 **£8.39**

MP43 Hook

MP96 Thread

MP82 Push-on

Ceramic and metal cane tips

For those that use the two-point touch technique, these two styles of tip provide the best audio feedback.



MP90

Ceramic tip

Long-lasting 2.2cm dome-shaped tip with excellent audio feedback and tactile transmission.

£13.99 **£16.79**

MP90 Hook

MP89 Thread ▲ Special order



MP89

Metal glide tip

Hard-wearing, 2.5cm metal-capped tip. Offers improved sensitivity and gives a distinctive sound. Ideal for when good audio feedback is required.

£3.50 **£4.20**

MP41 Hook **MP97** Thread

High mileage cane tips

Generally last two to three times longer than nylon tips.



High mileage rolling ball tip

Designed for durability without diminished performance. This 5cm tip uses hard-wearing, abrasion-resistant plastic to form the lower section.

£12.99 **£15.59**

MP111 Hook **MP113** Thread **MP112** Push-on



High mileage marshmallow tip

A hard-wearing, 2.5cm abrasion-resistant polymer marshmallow threaded tip designed to run easily over the ground.

£4.75 **£5.70**

MP93 Thread



Jumbo roller disc tip

Large 6.4cm disc tip made from long-lasting polymer, designed to give greater sensitivity and handle road obstacles and pavement cracks easily.

£10.50 **£12.60**

MP32 Hook **MP94** Thread

Rough terrain cane tips

When the going gets tough, these tips will keep you going. Suitable for use over a variety of terrains, pea gravel, grass, snow and many more.



MP114R

Dakota disc tip

15cm diameter disc tip designed for uneven surfaces, such as grass, pea gravel, snow and sand. Not suitable for urban areas. Made from durable plastic, it moves easily over the ground.

£9.75 **£11.70**

MP114W White Hook

MP114R Red Hook



MP88

Rover free-wheeling tip

Durable and lightweight hook-style tip with a large 7.6cm rubber wheel which is ideal for detecting obstacles on trails, fields or rural roads.

£11.75 **£14.10**

MP88 Hook

Tip adaptors

Adaptors will increase cane length by 2.5cm.

8mm tip adaptor – hook-to-thread

Converts your hook tip cane to fit thread tips. Attach to your cane as you normally would a regular hook tip, then screw on any 8mm thread tip.

£4.75 **£5.70**

MP115

Hook-to-thread



Call today 0303 123 9999

Cane accessories



MP04

Reflective tape

One metre roll of reflective tape to revive your cane.

£2.99 **£3.59**

MP06 White **MP04** Red



MP104

Ambutech cane renewal kits

Contains everything you need to revive your cane; reflective tape strips – 12 white, three red, 9m of elastic cord, two tips, one cord hook tool, instructions on how to restring your cane.

£22.99 **£27.59**

Graphite

MP104 Hook-style tipped cane

MP105 Push-on tipped cane ▲Special order

Aluminium

MP106 Hook-style tipped cane

MP107 Push-on tipped cane ▲Special order



MP107

Cane hook

A small device to hook your cane on a flat surface – such as a kitchen worktop – or rest it on the back of a chair. Not suitable for slimline canes.

MP80 **£5.99** **£7.19**



MP80



MP109

AmbuTech belt-pack cane holster

Black multi-purpose storage belt with a holster for your cane and an adjustable waist strap. Suitable for folding long or guide canes with four or more sections. It has two pockets, one with a zip, for carrying your phone, keys, spare tip or notepad. Fits waists from 80cm to 117cm (32 to 41 inches). Not suitable for canes with larger tips, such as the rolling ball, jumbo roller, rover and disc.

MP109 £28.99 £34.79



MP39

AmbuTech black leather cane pouch

This cane holder has a belt loop and a clip, so you can slide it into a belt, hook it over your waistband, or attach it to your bag. The cane sits securely in the V-shaped pocket. Suitable for folding canes with four to six sections – with the exception of those with larger tips, such as a rolling ball tip.

MP39 £26.99 £32.39

Adaptive Mobility Devices (AMD)

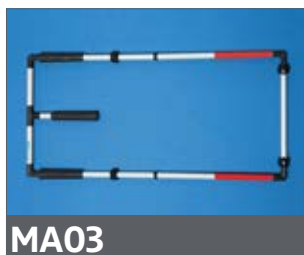
Adaptive Mobility Devices (AMD) can help children and adults who have difficulty handling a conventional cane, or they can be used as a pre-cane. The frame provides some protection and is particularly useful as a drop-off detector, and for those with balance issues. The devices are not designed to support the user's weight.

Adaptive mobility device

Designed to help with teaching white cane skills and available in adult and children's sizes with indoor or outdoor (rover) wheels; wheels not interchangeable.

The lightweight fibreglass design easily folds into three sections for compact storage. Double cane grips give users the tactile familiarity of a cane grip. A stair extension enables users to hold the AMD in a balanced position while clicking up each step, using similar skills for ascending stairs using a cane.

Standard colour is white with red tape at the bottom, other colours available as a special order.



MA03

Children's devices, 32cm wide

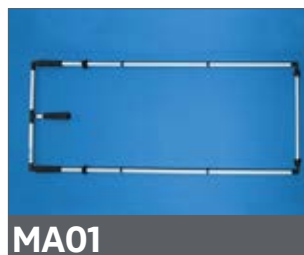
Specify length at time of order; 75cm, 80cm, 85cm.

£59.99 **£71.99**

MA03 With indoor wheels ▲ Special order

£64.99 **£77.99**

MA04 With outdoor wheels ▲ Special order



MA01

Adult devices, 46cm wide

Specify length at time of order; 90cm to 130cm in 5cm increments.

£64.99 **£77.99**

MA01 With indoor wheels ▲ Special order

£69.99 **£83.99**

MA02 With outdoor wheels ▲ Special order



AmbuTech tandem bar

Lightweight red fibreglass bar to connect instructor's and student's canes together to assist with cane technique training. Can be used with children and adults.

£16.50 £19.80

MA05



Pushbroom cane tip

This specially designed hook-style cane tip is for use by people who have difficulties in learning regular long cane techniques.

The tip has two wheels attached to a horizontal bar. Add to the bottom of a cane and push along the floor in front of you in a similar motion to pushing a broom along a floor.

Can be fitted with low profile wheels (for use indoors or on firm surfaces) or Rover wheels (for use on rural or rougher urban surfaces).

Please specify wheel style at time of order.

MA06 £33.99 £40.79 ▲Special order

Walking sticks and ferrules

Walking sticks

Walking sticks are intended as a means of support for people with sight loss and not as an aid to mobility. Please seek assistance from an occupational therapist or physiotherapist to ensure the stick is the correct length for you and can give the support required. If you need a walking stick for a higher user weight than 20 stone, you need to contact a specialist bariatric support service.

Custom length Ambutech walking sticks are available as a special order up to a maximum length of 125cm (50 inches).



Coopers adjustable walking stick

Lightweight white aluminium walking stick with a grey flat handle shaped for finger grip and to prevent your hand from slipping. Adjustable in 2cm intervals from 71cm to 96cm. Replacement ferrules MP31 and MP77.

MW13 **£9.99** **£11.99**



Ambutech adjustable crook handle walking stick

White aluminium walking stick with a black crook handle with a thumb support to keep your hand in the correct position. Replacement ferrule MP31 and MP77.

£23.50 **£28.20**

MW14 Short (72.5cm to 92.5cm)

MW15 Long (82.5cm to 102.5cm)



Coopers adjustable Fischer handle walking stick

Adjustable white aluminium walking stick with a black handle designed to spread pressure evenly across the hand, making it useful for people with arthritis and those who have difficulty gripping. Adjustable in 3cm intervals from 68.5cm to 94cm. Replacement ferrules MP49 and MP50.

£9.99 £11.99

MW20 Right-handed **MW24** Left-handed



Coopers adjustable escort handle walking stick

Adjustable white aluminium walking stick with a black handle designed to fit comfortably into either hand. Adjustable in 2cm intervals from 68.5cm to 94cm. Maximum user weight 100kg (16st). Replacement ferrules MP47 and MP49, MP49 and MP50.

MW30 £9.99 £11.99



Coopers adjustable folding right-handed Fischer handle walking stick

This adjustable white aluminium walking stick folds away neatly to approx. 30cm in length. The black handle is designed to spread pressure evenly across the hand, making it useful for people with arthritis or who have difficulty gripping. Adjustable in 2.5cm intervals from 79cm to 89cm. Maximum user weight 100kg (16st). Replacement ferrules MP47, MP49 and MP50.

£9.99 £11.99

MW43 Right-handed

Ferrules



MP50

The ferrules (rubber tips) on walking sticks wear down over time – always replace worn ferrules.

Diameters reflect the walking stick size. Each ferrule is fitted with a galvanised steel plate to spread pressure evenly to prolong its life.

£2.00 £2.40

MP50 1.6cm grey ZL-type ferrule

MP49 1.8cm grey ferrule

MP77 2.2cm grey ZZ-type ferrule

MP47 1.8cm black heavy-duty ferrule

£3.99 £4.79

MP31 2.1cm black heavy-duty ferrule



MP31

Walking stick hook

A small device to hook your walking stick on a flat surface - such as a kitchen worktop - or rest it on the back of a chair. This is larger than the Cane hook (MP80).

MP81 £6.99 £8.39



MP81

Victor Reader Trek talking book player and GPS

Navigate the world around you while reading the latest book on your list or listening to your favourite podcast.

With the press of one button, Trek will tell you your nearest address, the direction you're travelling and the next instruction for the route you're following. Simply drop a voice-tagged landmark and you can receive turn-by-turn directions to that exact point. Press the toggle button to get back to your reading material exactly where you left off.

£545.00 **£654.00**

HT278

▲ Special order



Eyeshields

Eyeshields are designed to exclude harmful ultraviolet (UV) and blue light, which can damage the retina. The different filter tints can help increase contrast and definition.

Your eye specialist can advise you which filter colour would best suit your eye condition.

They're light and easy to wear, indoors and out, and some can even be worn over your existing prescription glasses.

Browse the styles available at **shop.rnib.org.uk** (health and mobility)

Eye Health Information Service – **rnib.org.uk/eye-health**




Download our series of Understanding Eye Conditions booklets or order copies in print, braille or audio – **shop.rnib.org.uk** (health and mobility).







Perkins brailers

A durable braille writing machine used by people of all ages to produce braille for school, work or leisure. Since its invention in 1951 it's become the most widely used mechanical braille writer in the world.

	Classic brailer	Jumbo brailer
		
Order code	BM36	BM07
Price from	£749.00	£799.00
Benefits	Standard braille	If standard braille is difficult to read
Colours – cannot be specified	Blue / Grey	Blue / Grey
Casing	Metal	Metal
Weight	4.80kg	4.80kg
Key force	~1.36kg	~1.36kg
One handed capability	No	No
Compatible for Complex Math	Yes	Yes
Maximum paper size (Perkins)	29.2 x 35.6 cm	29.2 x 35.6 cm
Dimensions (LxHxW)	37 x 23 x 15 cm	37 x 23 x 15 cm
Suggested paper weight	32 – 41 kgs	32 – 41 kgs
Cells per line	42	28
Lines per page	26	13
Braille Cell Size (Horizontal / Vertical Spacing)	0.22cm / 0.61 cm	0.31cm / 0.94 cm
Screen size and resolution	n/a	n/a
Power supply	n/a	n/a
Internal flash memory	n/a	n/a
Voice options	n/a	n/a
Braille code options	n/a	n/a
Dust cover and eraser	Yes	Yes

	Unimanual brailler	Smart brailler
		
Order code	BM08	Coming soon
Price from	£799.00	
Benefits	Adapted for one-handed use	Visual, tactile and auditory feedback
Colours – cannot be specified	Blue / Grey	Midnight Blue / Raspberry red
Casing	Metal	Plastic
Weight	4.80kg	3.9kg
Key force	~1.36kg	
One handed capability	Yes	No
Compatible for Complex Math	Yes	Yes
Maximum paper size	29.2 x 35.6 cm (Perkins)	21 x 29.7cm (A4)
Dimensions (LxHxW)	37 x 23 x 15 cm	34 x 15 x 24 cm
Suggested paper weight	32 – 41 kgs	
Cells per line	42	28
Lines per page	26	26
Braille Cell Size (Horizontal / Vertical Spacing)	0.22cm / 0.61 cm	0.22cm / 0.61 cm
Screen size and resolution	n/a	4.3 in (10.9 cm) 480 X 272 pixels
Power supply	n/a	24VDC, 2.5A
Internal flash memory	n/a	Yes
Voice options	n/a	Yes
Braille code options	n/a	Yes
Dust cover and eraser	Yes	Yes

Writing braille

Perkins accessories

Adapt your Perkins braille to make it work better for you.



BM10

Perkins curved one-hand extension keys

Set of curved metal extension keys for the classic Perkins braille. They bring the keys closer together so you can write braille with just one hand. The standard keys must be removed for extension keys to be fitted.

BM10 £49.99 £59.99



Perkins servicing and repairs

Within guarantee

We have partnered with the Royal National College for the Blind (RNC) to support Perkins repairs. If your Perkins is within the guarantee period and needs repairing, contact our Helpline for an RMA number.

Out of guarantee

For out of guarantee service and repairs, contact RNC direct on **0800 027 6574**, email **perkins.braille@rnc.ac.uk**, or send post to **Perkins Repairs, RNC, Venns Lane, Hereford, HR1 1DT**.

Frames and styles

Also known as slate and stylus, these lightweight frames easily slide into your bag, so you can write braille notes on the go and without needing to worry about battery life! Just like pen and paper.



BF07

Marburg braille frame

A4 plastic frame for producing interpoint double-sided braille on paper, plastic film or braille labelling tape. 27 lines, 30 cells per line (810 cells in total). Supplied with saddleback style. Use with heavyweight unpunched paper (BP70) or lightweight punched paper (BP57).

BF07 £27.50 £33.00



BF19

Janus interline braille frame

Double-sided plastic frame for producing interline double-sided braille. Six lines, 19 cells per line on one side. Five lines, 19 cells per line on the other side. Produces braille on both sides without needing to remove the paper. Supplied with plastic style. Use with cartridge paper refill (BP27).

BF19 £6.50 £7.80



BF16

Jumbo braille frame

Four-line aluminium frame for producing jumbo-sized, single-sided braille – 18 cells per line. Use with cartridge paper, Brailon and labelling tape. Supplied with plastic-handled saddleback style.

BF16 £11.99 £14.39



BS11

Saddleback style

The groove in the plastic handle supports the forefinger, making it easy to apply more pressure. Produces standard size braille.

BS11 £2.50 £3.00



BS04

Eraser braille style

Wooden, pear-shaped style with a button top and flattened pointed end for erasing incorrect braille dots.

BS04 £4.25 £5.10

Braille paper

Perkins-sized white cartridge paper

The perfect size for your Perkins braille, 29cm by 28cm. Paper is hole-punched. Store in a Perkins-size ring binder (BB04, £4.99).

- BP65** Lightweight, 140gsm, 180 sheets **£7.25** **£8.70**
BP69 Heavyweight, 170gsm, 120 sheets **£6.25** **£7.50**
BP51 Heavyweight, 250gsm, 100 sheets **£7.00** **£8.40**

White cartridge paper – lightweight

Hole-punched paper. Suitable for most personal work. 140gsm, 180 sheets per pack.

- BP66** 19cm by 26cm **£8.50** **£10.20**
BP64 25.5cm by 34cm **£7.25** **£8.70**

White cartridge paper – heavyweight

Hole-punched paper. Durable to last a long time. 170gsm, 160 sheets.

- BP68** 23.5cm by 25.5cm **£7.25** **£8.70**



A4 braille paper

21cm by 29.7cm.

£3.75 **£4.50**

BP57 Lightweight, 135gsm, punched, 50 sheets

£3.50 **£4.20**

BP70 Heavyweight, 170gsm, unpunched, 45 sheets



BP30

Marburg refill paper

11cm by 14.9cm. Wiro-bound memo pad for use with the Marburg writing set. 50 sheets of 135gsm paper.

BP30 **£3.99** **£4.79**



BP27

Cartridge braille paper – lightweight

7.5cm by 12.7cm. Unpunched paper that fits the Janus interline frame (BF19). 412 sheets, 135gsm.

BP27 **£3.99** **£4.79**

Embosser paper

Non-detachable tractor feed

Page length is 30.5cm. 500 sheets per pack, 135gsm.

BP41 23.5cm wide **£16.75** **£20.10**

BP31 30cm wide **£19.75** **£23.70**

Detachable tractor feed

500 sheets per pack, 135gsm. Width stated is with tractor feed in place.

BP39 32.3cm by 28cm **£17.75** **£21.30**

BP40 30cm by 33cm **£23.75** **£28.50**

Brailon

Plastic paper mainly used to reproduce tactile images, long lasting braille and useful for people who struggle to feel braille on standard paper. It can be used in a Perkins brailier.

Brailon – unpunched

BP09	21.5cm by 28cm, 100 sheets	£11.50	£13.80
BP11	24.5cm by 29cm, 100 sheets	£13.50	£16.20
BP14	29cm by 28cm, 500 sheets	£62.50	£75.00

Brailon – punched

BP35	9.5cm by 13cm, 50 sheets	£2.99	£3.59
-------------	--------------------------	--------------	--------------

Brailon notebook

Spiral-bound notebook.

BP63	5.8cm by 11cm. 50 sheets.	£2.50	£3.00
-------------	---------------------------	--------------	--------------

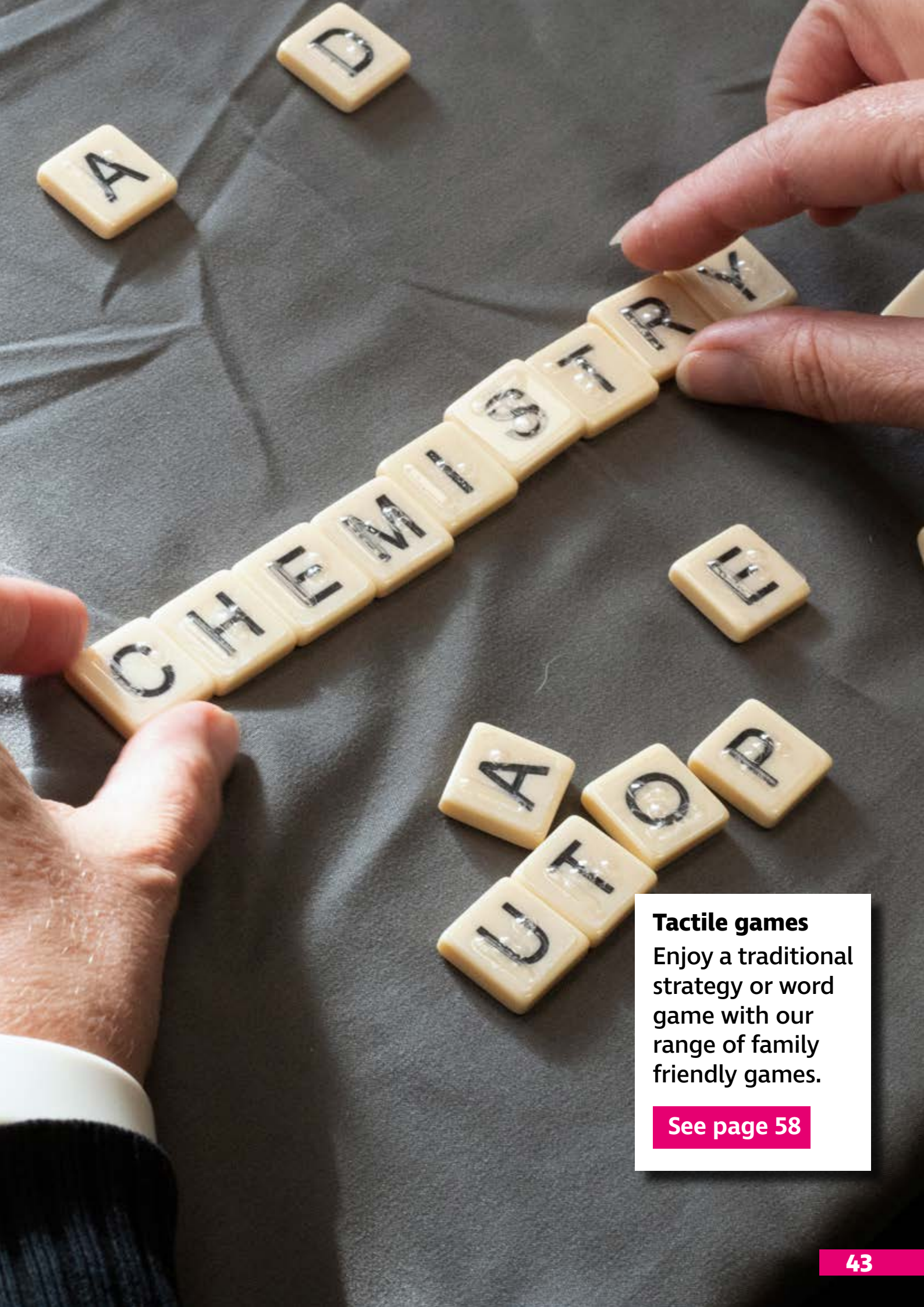
Embossing film

The surface of this plastic film (also known as German film) rises when drawn on with a ballpoint pen or embossing tool, making instant tactile diagrams. Use with a Geometry mat (LC177), £7.99.



Embossing film

LC22	A4 size, 600 sheets	£59.99	£71.99
LC23	27cm by 34cm, 400 sheets	£61.99	£74.39
ZM04	A5 size, 100 sheets	£2.50	£3.00



Tactile games

Enjoy a traditional strategy or word game with our range of family friendly games.

[See page 58](#)

Diaries and calendars

All our diaries and calendars are produced in contracted (grade 2) Unified English Braille (UEB). Our 2021 stationery will be available to order from September 2020, prices to be confirmed.



BB0820

Braille desk diary

A4 ring binder containing a week-per-page braille diary, includes important dates and room for notes.

If you'd like to reuse your ring binder from a previous year, simply order the diary refill.

BB0820	2020 diary	£6.00	£7.20
BP57	Refill pack, plain sheets	£3.75	£4.50
BB08R20	2020 diary refill	£4.40	£5.28
BB0821	2021 diary	(price TBC)	
BB08R21	2021 diary refill	(price TBC)	



BB1120

Braille pocket organiser

Small ring binder with a month-per-page calendar and 60 blank pages for your notes and appointments.

BB1120	2020 pocket organiser	£6.80	£8.16
BB1121	2021 pocket organiser	(price TBC)	
BB14R	Refill pack, plain sheets	£2.50	£3.00



BB1021

Braille pocket date calendar

One month per page. Important dates, such as bank holidays, are listed on the next page.

BB1021	2021 pocket calendar	(price TBC)	
---------------	----------------------	-------------	--



Braille indexed address book

Ring binder containing 26 index cards, each with one letter of the alphabet along one side for easy reading. Includes 100 sheets of braille paper for recording contact details.

BB14	Address book	£9.50	£11.40
BP14C	Spare alphabet cards	£2.50	£3.00
BB14R	Refill pack, plain sheets	£2.50	£3.00
BP35	Refill pack, brailon	£2.99	£3.59

Orbit Reader 20

This compact and revolutionary refreshable braille display offers easy book reading and note-taking at an affordable price. The Orbit Reader 20 is portable and features 20 refreshable eight-dot braille cells.

As a stand-alone device, you can read content stored on an SD card that simply inserts into the back of the unit. Prepare and download your pre-translated materials as brf, brl or txt files and transfer them to the SD card provided. You can use any braille code, in any language and of any genre including music, maths, or your favourite book.

It comes with pre-installed content, including a variety of books and a searchable Oxford English Dictionary.

Use Bluetooth to connect to your Apple, Android or Kindle device and access a world of books through reading apps such as Kindle®, Adobe Digital Editions® or iBooks®. The translation into braille is performed by your device's screen reader to give you a quick braille output on your Orbit Reader 20.

£499.00 £598.80

HT358





Coming soon

Orbit Reader 20
Plus

Orbit Reader 40

Orbit Writer

VICTA grant

If you are registered blind or partially sighted, aged eight to 29, and a UK resident you could be eligible for a grant toward the cost of an Orbit Reader 20 – learn more about RNIB product grants from VICTA at victa.org.uk/our-services/grants

RNIB grant

For information on the terms and conditions, and to download the Grant Application form, please visit rnib.org.uk/grants or contact our Technology for Life Team on **0303 123 9999**.

Braille displays and note-takers



HT279

Brailiant BI 14 braille display

Designed for extensive use and housed in a hard-wearing yet lightweight aluminium casing.

Easily connect to your Apple Mac, iPhone, or Windows PC with relevant software to read and control your devices directly from the braille display. Connect to your devices using USB or Bluetooth.

It features: an eight-key braille keyboard; six command keys; four thumb keys and two spacebars; cursor keys above each braille cell; up to 20 hours' use; and auto-shut off.

Compatible with JAWS for windows, Window-Eyes, NVDA, VoiceOver for Mac and iOS (also AppleTV, iPhone and iPod), and Serotek System Access.

HT279 14 cells £845.00 £1,014 ▲ Special order



HT274

Braille Sense U2 portable braille note-taker

Powerful note-taker with 32 braille cells and pre-installed software – including a word processor, email and web browser. Link to another device, such as an iPhone. Run several programmes at once and switch between tasks.

HT274 £3,395.00 £4,074.00 ▲ Special order

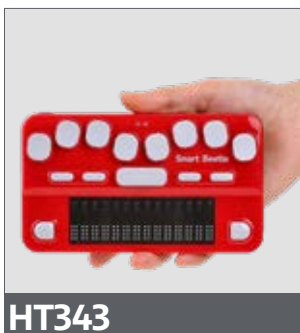


HT314

Braille Sense U2 mini braille note-taker

18-cell note-taker. Windows operating system. Includes a word processor, media player, GPS and Excel Viewer.

HT314 £2,395.00 £2,874.00 ▲ Special order



HT343

Smart Beetle braille display

This portable 14-cell braille display, which can connect up to five Bluetooth devices at the same time, has 24-hour battery life, a Perkins-style keyboard, two scroll keys and four function keys. Compatible with JAWS, Window-Eyes, SuperNova, System Access, NVDA, COBRA, VoiceOver for Mac and iOS, Mobile Accessibility and BrailleBack for Android.

HT343 **£875.00** **£1,050.00** ▲ Special order



HT382-40

Focus Blue 5th generation braille display

The Focus Blue combines comfort, portability, and advanced features for the ultimate go-anywhere braille interface device. A highly responsive eight-dot keyboard and seamless USB-C and Bluetooth® 4.1 connectivity make the Focus Blue the ideal note-taking companion for smartphones, iPads®, tablets and other mobile devices. The Scratchpad feature lets you take notes and read books even when you aren't connected.

From **£1,295.00** ▲ Special order

HT382-14	Focus 14	14 cells
HT382-40	Focus 40	40 cells
HT382-80	Focus 80	80 cells



Call our **Sight Loss Advice Service's** on **0303 123 9999** or email **helpline@rnib.org.uk** for information, advice and guidance on accessible technology – including note takers and screen reading software.

Tiger braille technology gives you a choice of dot height – light, normal and heavy. This gives you the flexibility to adjust the definition of the braille to suit your finger sensitivity. This feature is also handy when producing tactile images.

All our embossers are supplied with Tiger Software Suite (TSS), enabling you to print directly from Word and Excel. The software translates a document directly into braille and images; clipart, graphs and charts are converted automatically into tactile graphics. They're also compatible with Duxbury and other braille software.

Only available to buy in the UK – price includes delivery, however, if you're buying from Northern Ireland, please call us on **0303 123 9999** for a delivery charge price.



ViewPlus SpotDot Emprint embosser – red

The only full colour ink and braille embosser in the world, working with A4 paper and Tiger Software Suite for production within MS Office. Ideal in education settings for producing resources learners with a visual impairment can share with their peers and collaboratively work on, enables teachers and learners to read the same materials.

Single-sided braille with an embossing speed of 50 characters per second. 20 dots per inch (DPI). Paper size: 4.33 to 8.5 inches.

Paper weight: 50gsm to 230gsm.

HE13R £5,995.00 £7,194.00 ▲ Special order



HE12

ViewPlus Tiger Max embosser

A fast and versatile desktop braille embosser that can handle large paper sizes. Quickly produces braille and high-resolution tactile graphics. Single-sided braille with an embossing speed 60 characters per second. 20 dots per inch (DPI). Paper size: four to 14 inches (10.1cm to 35.5cm). Paper weight: 50gsm to 230gsm.

HE12 £4,950.00 £5,940.00 ▲ Special order



HE15

ViewPlus Tiger Premier embosser

Designed to run long hours and produce outstanding results, perfect for universities and local authorities. This network-ready embosser makes printing double-sided braille and the highest-resolution tactile graphics easier than ever.

The Tiger Software Suite translator will automatically arrange the spacing between braille text and tactile diagrams. Use with Microsoft Word and Excel, to create books, raised diagrams, math worksheets and more at the touch of a button.

Compatible with Duxbury and other braille software, offering the choice to print from your favourite programmes. 100 characters per second, 20 dots per inch (DPI). Continuous tractor feed paper: four to 12 inches (10.1 to 30.5cm). Paper weight: 50gsm to 230gsm.

HE15 £11,325.00 £13,590.00 ▲ Special order



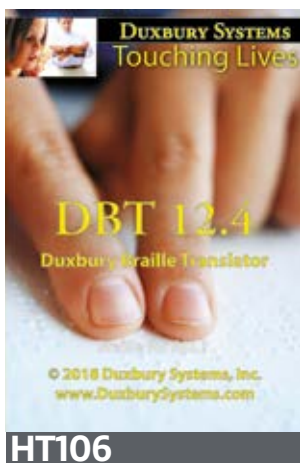
HE14

ViewPlus Tiger Embraile embosser

Perfect for home or office use, this reliable, lightweight and compact embosser takes up little desk space. Produces single-sided braille at 25 characters per second and can switch between single sheet or tractor feed paper.

Tiger Software Suite provides easy-to-use braille translation through Microsoft Word, also compatible with Duxbury and other braille software. 17 dots per inch (DPI). Paper size: three to 8.5 inches wide (7cm to 21.6cm). Paper weight: 50gsm to 175gsm.

HE14 £1,695.00 £2,034.00 ▲ Special order



HT106

Duxbury Braille Translator

Translation and formatting software to automate the process of conversion from print to braille (and vice-versa). Work directly in the braille as well as the print.

Easy-to-use – even if you don't know braille – to create highly accurate materials such as education materials, office memos, bus schedules and personal letters. Where you need to be sure of "perfection", we recommend proofreading by a knowledgeable brailist.

Simple to use, yet its depth, power and accuracy are such that it's used by most of the major braille production centres throughout the world.

HT106 £535.00 £642.00 ▲ Special order



Braille labelling

Keep all your stuff in order with this selection of braille labelling products.



Braille labeller

This handheld labelling machine makes it easy to produce braille labels, even without knowledge of braille. It has a white dial which shows the alphabet in braille and black print. Produces uncontracted braille and some contractions. Supplied with one roll of clear 1.2cm labelling tape.

DL65 £31.50 £37.80



Labelling tape

For use with the Braille labeller (DL65), each pack contains 10 rolls of self-adhesive tape. Each roll contains 3.5 metres; a total of 35 metres.

£16.99 £20.39

DL104 9mm clear

DL105 12mm clear

DL106 12mm black



Clear self-adhesive labelling sheets

A pack of eight Perkins-size sheets which can be embossed and then cut to the required size; ideal for labelling items discreetly or where you want the print or image to show through. The backing sheet is scored along the centre for easy removal.

DL11 £7.75 £9.30 ★ Bestseller

Tactile solutions

Add tactile marks to your washing machine to identify the different settings and functions, to your oven or hob dials to mark different temperatures or to thermostat controls. Choose from a range of small adhesive rubber dots or create your own marks with Tacti-Mark. Note – **DL103** are foam (not rubber).



DL25

Orange BumperStops ★ Bestseller

£4.99 **£5.99**

DL25 60 round orange flat head BumperStops.



DL24

Bumpons

£5.70 per pack

DL14 56 large round clear dome head Bumpons

DL18 56 round black flat head Bumpons

DL107 54 square black flat head Bumpons

£5.99 per pack

DL24 72 small round clear dome head Bumpons



DL102

Mixed pack of Bump-Dots

Contains 80 Bump-Dots; eight sheets of 10 dots. Black dome head – large and small. Clear dome head – large, medium and small. Black flat head squares – large and small. Orange round flat head.

DL102 **£10.00**



DL103

Mixed pack of Touch-Dots

Contains 320 foam round flat head dots; five sheets of 64 dots. Red, orange, yellow, white and black.

DL103 **£7.00** **£8.40**



DL40

RNIB Tacti-Mark

A liquid plastic that sets hard, allowing you to create your own tactile marks using the fine-pointed nozzle. Can be used on clothing, paper, metal and hard plastics. It takes 24 hours to fully dry; once hardened, it cannot easily be removed.

£4.40 **£5.28** per tube

DL40 Orange **DL40A** Black



DL120

Band-It tactile bands

Brightly coloured bands to identify objects around the home, such as shampoo bottles and cleaning products. 10 flexible reusable bands; two of each design.

DL120 **£9.99** **£11.99**

Keyboard labelling

Make your own bespoke keyboard, using stickers and raised dots.



HK57

Braille keyboard stickers

72 clear, self-adhesive braille stickers for adapting a standard computer keyboard. Because the labels are clear, the keyboard can be used by both print and braille readers. Includes all letter and number keys, as well as most of the common function keys.

HK57 **£16.50** **£19.80**



DL90

Loc-Dots

Identify computer and laptop keys, central heating or stereo controls with these small stickers. The thin flat base of each sticker measures 9mm in diameter and in the centre there is a single raised 1mm high dot.

£2.99 **£3.59** per pack of six dots

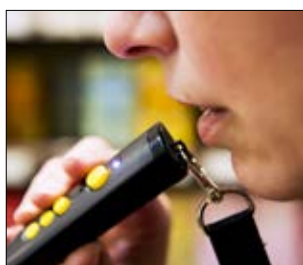
DL16 Clear **DL90** Orange

RNIB PenFriend

Our bestselling labelling device lets you record your own voice on to sticky labels which you can attach to a wide range of items. Simply play back the recording for easy identification.



DL110



RNIB PenFriend 3 audio labeller ★ Bestseller

Our easy-to-use labelling device lets you record your own voice on to sticky labels which you can attach to a wide range of items, such as spice jars, your CD or vinyl collection, clothing and beauty products or your plant seed packets. Simply touch the PenFriend to the label to hear back your recording, for easy identification.

Cut labels into pieces for when you have multiples of one item to save on labels, and use the magnetic labels as personal reminders or notes on your fridge door. More labels are available, including laundry labels, helpful for identifying clothes, bed linen sizes and more.

Store up to 250 hours of recording. 127 labels, 10 magnets, one keyfob and a lanyard. Supplied with two AAA batteries. Use as an MP3 player. Back up recordings with Label Manager software.

DL121 £81.99 £98.39

Menu audio is available in other languages – visit **shop.rnib.org.uk** for further details.

Buy extra label packs in sequence A, B, C etc. They're individually numbered, if you've two with the same number, both labels will read out the newest recording attached to the number.



DL77

White labels for RNIB PenFriend

Packs A and B contain 381 labels (273 small circles, 54 large circles and 54 large squares). Packs C to H and pack J contain 418 labels (364 small circles and 54 large squares). Note, there is no pack I.

£13.00 **£15.60** per pack

DL77 Pack A **DL78** Pack B **DL79** Pack C

DL80 Pack D **DL81** Pack E **DL82** Pack F

DL88 Pack G **DL89** Pack H **DL117** Pack J



DL112

Coloured labels for RNIB PenFriend

Coloured labels for RNIB PenFriend. 418 labels in yellow and orange; 364 small circle labels and 54 large square labels.

£13.00 **£15.60** per pack

DL112 Pack one **DL113** Pack two

Washable laundry labels for RNIB PenFriend

Each pack contains 48 self-adhesive labels, measuring 3cm by 2cm. Each label will withstand 50-plus washes up to 50 degrees; suitable for use in tumble dryers. Once laundry label packs are opened you should use within six months. Once applied to the clothing care label, wait seven days before washing to allow the adhesive to set.

£16.25 **£19.50** per pack

DL96 Pack one **DL97** Pack two

DL98 Pack three **DL118** Pack four



DL96

Tactile games

Enjoy a traditional strategy or word game with our range of family friendly games.



GB95

Braille Scrabble ★ Bestseller

Mattel's bestselling word game! The tiles sit securely in place and the board rotates to face you on your turn. The tiles have clear braille labels, so the large black print can be read underneath. Tactile markings on the premium squares. Suitable for two to four players, aged 10 years upwards.

GB95 **£32.50** **£39.00**



GB105

Tactile Connect 4

We've modified this family favourite from Hasbro, so the coloured counters are distinctly different.

GB105 **£18.50** **£22.20**



GB107

Braille Banagrams ♦ New

Race against each other to build crossword grids and use all the letter tiles. There's no turn-taking – it all happens at once and it's a race to the finish. Suitable for two to eight players, aged seven upwards. The tiles have clear braille labels, with large black print underneath.

GB107 **£27.50** **£33.00**



GC06

Uno braille playing cards

A mixture of skill and chance is needed to play Uno which can be played with two to 10 players. Each card shows the numbers and shapes in both print and braille.

GC06 **£13.75** **£16.50**

Board games

Find dominoes,
chess, draughts,
playing cards,
and more online.

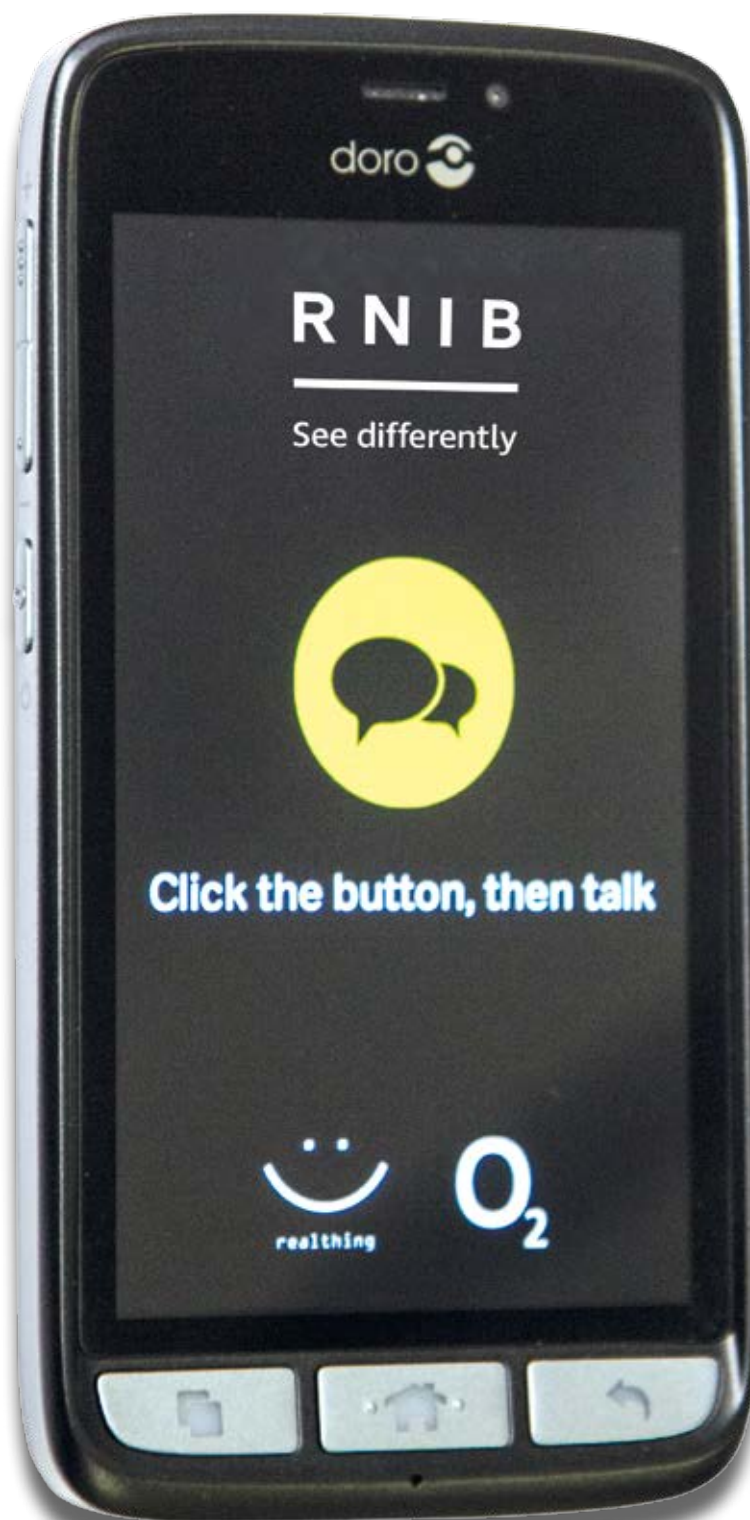
shop.rnib.org.uk



In Your Pocket

In Your Pocket is a reading device designed to make accessing RNIB Newsagent and Talking Books simple. Voice-operated, just say "read the Guardian", or "find books by Agatha Christie". It's also a talking mobile phone, say "call John" or "add a contact for Jane Smith".

The touch-screen handset comes complete with RealSAM interactive speech software, a subscription to RNIB Newsagent, Talking Books and connectivity to O2 with 3GB of mobile data.



To order, please call RealThing's dedicated In Your Pocket Helpline on **0333 772 7708**, or email RealThing directly at **helpline@realsam.co.uk**

Reading services

RNIB Newsagent

Our Newsagent service provides a wide range of newspapers and magazines in audio, braille and electronic text. You can also plan your week's TV or radio choices with our Big Print guides; listen to your favourite magazines; and get your newspaper delivered by email or on CD. **rnib.org.uk/newsagent**

RNIB Library

Our free library has more than 60,000 books in its collection – allowing you to borrow a wide range of fiction and non-fiction titles in braille, audio and giant print. You can also borrow braille and giant print sheet music. **rnib.org.uk/library**

RNIB Bookshare

A free online resource which provides UK curriculum materials in a range of accessible formats that can be adapted to suit the personal reading needs of learners. The service enables learners who cannot read standard print, including those with dyslexia or sight loss, to read the same books at the same time as their peers, giving them the same educational opportunities. **rnibbookshare.org**

Children's shared reading books

Check out our delightful shared reading books for pre-school or primary children, and get ready to read them over and over and over again! Adapted to include Unified English Braille (UEB) on either interleaved clear sheets or clear self-adhesive labels, allowing the print text and images to be seen underneath and the book to be enjoyed by everyone. **shop.rnib.org.uk/**



Learning braille

Braille courses

You're never too old to learn braille and actually, like most activities, the more you practise the better you become. By far the best way to learn, is through several short sessions each week, rather than occasional marathons.

It's worth contacting your local Social Services Sensory Impairment team, local society for the blind and local further education colleges to see if they provide braille classes, or are able to offer support while you follow a self-study course.



Discover our resources to help you learn or teach braille – visit **shop.rnib.org.uk** and **rnib.org.uk/braille**

RNIB Certificate in contracted Unified English Braille

This one-year self-study course teaches the basics of understanding and communicating in contracted Unified English Braille (UEB). It is aimed at any sighted learners who support individuals using braille, such as parents, teachers, teaching assistants and support workers. It is also open to anyone who has a specific interest in braille.

There are two course start dates a year (May and October), contact **braillecertificate@rnib.org.uk** for further information.

Ready, Steady, Read

Our monthly magazine is full of short articles to help you practice your new braille reading skills – it acts as a stepping stone between completing a braille course and reading a book. It includes articles on wildlife, gardening and celebrities, and practice for building your braille skills. **rnib.org.uk/newsagent**

Download our learning braille fact sheet for full details on courses available. **rnib.org.uk/learnbraille**.

Learning the alphabet

Fun products to support young children in learning the alphabet.



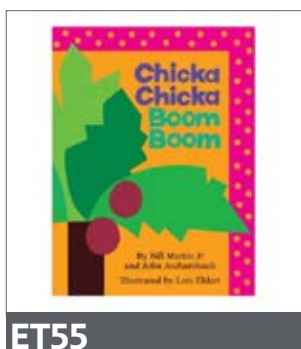
LB30

Tactile alphabet and numbers sheets ♦ New

Four tactile thermoform sheets that show the 26 letters of the alphabet (uppercase and lowercase) and numbers 1 to 10 in raised print and embossed braille. A perfect introduction to the characters of the print and braille alphabet for pre-schoolers.

LB30 £9.99

Great to use alongside this shared reading book ...



ET55

Chicka Chicka Boom Boom

A rhythmic, rhyming alphabet book. It seemed like a good idea for A, B and C to meet at the top of the coconut tree – until the other 23 members of the gang decided to follow suit. Will there be enough room? This is a shared reading book with text in print and braille.

ET55 £6.50



LB29

Braille teaching cube keyring

The keyring fob is made of rotating blocks with raised black rivets that are used to represent the dots in a braille cell. Simply twist the blocks to create every braille character from 'a' to 'for'.

LB29 £6.00 £7.20



ET37

Braille reward stickers

These brightly-coloured stickers, with tactile images and encouraging phrases in both uncontracted braille and large print, are a fun reward for young children. The pack contains 12 designs: super, star, bravo, high-five, proud, hooray, superb, great, smart, goal, well done and good job.

ET37 £5.25 £6.30

Sports stickers (ET38) and reward stickers with Spanish phrases (ET39) are also available.

Maths and science

Make maths and science accessible – create tactile graphs and diagrams, mark charts with Tacti-Mark or tactile bumps, and measure large and small objects with tactile and talking measuring equipment.



LC239

Cubarithm arithmetic board

Cubarithm helps in the teaching of arithmetic layout and, unlike paper, allows easy correction.

LC239 Board £19.99 £23.99

LC240 Cubes £39.00 £46.80

LC241 Magnet £3.00



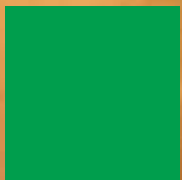
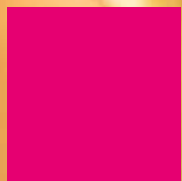
ET45

Twin Science Discovery Set

This set uses easily combined electronic blocks to simplify and explain how complicated-looking devices work. Each module has braille on the back to identify components needed to build the circuits for robots, self-propelled cars, torches and more. Recommended for children who are already interested in robotics.

ET45 £199.00 £238.80





Buying

from

RNIB

A contract starts between us when we accept your order and payment. Your statutory rights are not affected by our terms and conditions. For information on pricing and VAT, see "Our pricing".

Contacting us

Call us on **0303 123 9999** or email **helpline@rnib.org.uk** if you have any questions, or to obtain a full copy of our terms and conditions. **shop.rnib.org.uk/returns**

If you've bought products from an RNIB Products for Life Store or other retail outlet, you must contact them directly for updates on your delivery status and to discuss returning unsuitable or faulty items.

Delivery

We will make every effort to dispatch your order within five to seven working days, subject to availability. We send many of our items by freepost under the "Articles for the Blind" scheme so you will not be charged postage. This free scheme offers no guarantees of delivery or insurance.

For some heavy and high value items, and following changes in legislation on replacement lithium batteries, you may be charged a

courier fee, which is shown on our shop or advised by our Helpline when placing an order.

Packages from us will include a 'dispatch note' which details your order. Check this against the actual contents and alert us within seven working days of receipt about any discrepancies.

If you do not receive your goods, or a letter advising you of a delay, within seven working days of placing your order, then contact us.

Cancelling or amending your order

Cancellations or amendments cannot be made between placing your order and receiving your parcel; this includes address changes and adding or removing lines.

You're able to cancel your purchase within 14 days, from the day after you received the item. Once you've received your order and wish to return for a refund, please see the guidance under "Returning unsuitable items".

Guarantee period

We guarantee products are as described, free from faults and fit for purpose, for a minimum of 12 months, beginning on the date

when you purchase the products from us.

Where a product comes with a manufacturer's warranty, please do not complete the registration paperwork until you're sure that you wish to keep the product. Return the unregistered item within 14 days of receipt if you do not wish to keep it.

For warranty claims, please follow the guidance and contact information on your warranty card. If you've lost your warranty card, please contact our Helpline for assistance.

Returning unsuitable items

If you've changed your mind about keeping your purchase, please inform us within 14 days from the day after you received the item(s). Please return the item(s), at your own cost, within 14 days, and we'll give you a refund.

We reserve the right to deduct an amount from the refund if you have diminished the value of goods by handling them beyond what is necessary to establish their nature, characteristics and function.

We'll reimburse you with undue delay, and not later than 14 days after we receive the goods back from you.

Which products can't be returned?

The following products won't be eligible for exchange or refund (unless faulty or not as described):

- Products which you received over 14 days ago.
- Products which have been opened or their protective seals removed and cannot be returned for hygiene reasons.
- Products that contain your personal data or have been manufacturer-registered.
- Computer software codes that have been redeemed or activated, or computer software that has been opened.
- Products that have been combined with other goods after delivery so that they become inseparable.
- Where a product has been personalised for you or made to your specific measurements (bespoke items).

Returning faulty items

We reserve the right to have the product independently tested by a third party, prior to agreeing a suitable resolution. If no fault is found the item will be returned.

to you. Where your item needs to be sent to our supplier for assessment and repair, this will increase the turn-around time to complete your return (this may take up to six weeks if components need to be ordered in specially to carry out the repair).

If your product develops a fault within 30 days of purchase, please contact our Helpline to arrange the return, and subject to confirming the fault, we can give you an exchange, repair or full refund, as per your preference. For online or telephone purchase we'll refund the standard delivery charge provided you return the full order. If you're only returning some of the items on your order, we will only refund the cost of those returned items.

If your item becomes faulty after 30 days, please contact our Helpline for further information.

Return postage costs

All items are returned to us at your own risk. You are initially responsible for the cost of returning the item to us; we will reimburse postage costs upon confirmation of the fault. To be reimbursed, you must provide us with proof of postage and

costs incurred. If required, we will organise a courier to collect the item from you.

If it is a high value item, we recommend returning it to us by recorded delivery or courier so that it insured against loss or damage. Royal Mail will only cover items sent Articles for the Blind up to a maximum value of £46. If your return is lost in post, you will need to contact the carrier and follow their claims procedure.

We will not reimburse postage costs for unsuitable item returns.

How to return a product

Please contact our Helpline. They will provide you with a returns number, known as an RMA number, and will confirm where to send the item back to.

Once you have received your RMA number, please ensure you return the item within seven days to ensure there are no delays processing your refund.

Write the RMA number on the returns label (attached to your despatch note).

Securely attach the returns label to the outside of your parcel (do not attach it to the product or product packaging).

Include your name and address inside the parcel, in your preferred format to ensure we can identify the goods as coming from you.

Ensure the item is packaged securely for stable transit.

Not following these steps will cause delays in processing your refund. If we do not receive your product back within 30 days of your returns case being opened, we will close the case.

Damaged goods and packaging

On receipt of your goods, please ensure you open the packaging carefully and keep hold of it until you're sure that you are keeping the item. There is a returns label attached to your despatch note, please keep this safe. You will need to take good care of the item while it is in your possession.

Damaged on delivery

If you receive an item which you believe has been damaged in the post, please contact our Helpline within seven days of receipt of the item. On receipt of the item and confirmation of the postal damage, we will either refund or exchange. If the item is found not to be damaged, it will be returned to you.

Complaints and feedback

If you wish to make a complaint, provide feedback or get further information or clarification about a product or these terms and conditions, please contact our Helpline on **0303 123 9999**, or write to us at:

RNIB,
Floor 1 Midgate House,
Midgate,
Peterborough,
PE1 1TN

Or email helpline@rnib.org.uk

New Product Guide

Published five times a year and keeps you up-to-date on new products available from RNIB. Contact our Helpline on **0303 123 9999** to subscribe to this free publication. It's available in email, braille, audio and large print.

Please help us save funds and opt for email if you can, thank you.

Products for Life Stores

Before visiting, please phone or check our website, to check opening times and details of the products available **rnib.org.uk/stores**.

RNIB London,
105 Judd Street,
London, WC1H 9NE.

Phone: **020 7391 2356**

RNIB Edinburgh,
12-14 Hillside Crescent,
Edinburgh, EH7 5EA.

Phone: **0131 652 3140**

RNIB Camelon,
(Forth Valley Sensory Centre),
Redbrae, Camelon Falkirk, FK1 4DD.

Phone: **01324 590 888**

RNIB NI Belfast,
Victoria House, 15-17 Gloucester
Street, Belfast, BT1 4LS.

Phone: **028 9032 9373** (option 2).

Cardiff Institute for the Blind,
Jones Court, Womanby Street,
Cardiff, CF10 1BR.

Phone: **029 2039 8900**



**Sight Loss
Advice Service**

R N I B

See differently

**We're here
for you**

**when you
need us.**

If you're coming to terms
with sight loss, you're not
alone. We're here to support
you in any way we can.

Reach out to us today.

**rnib.org.uk
0303 123 9999**